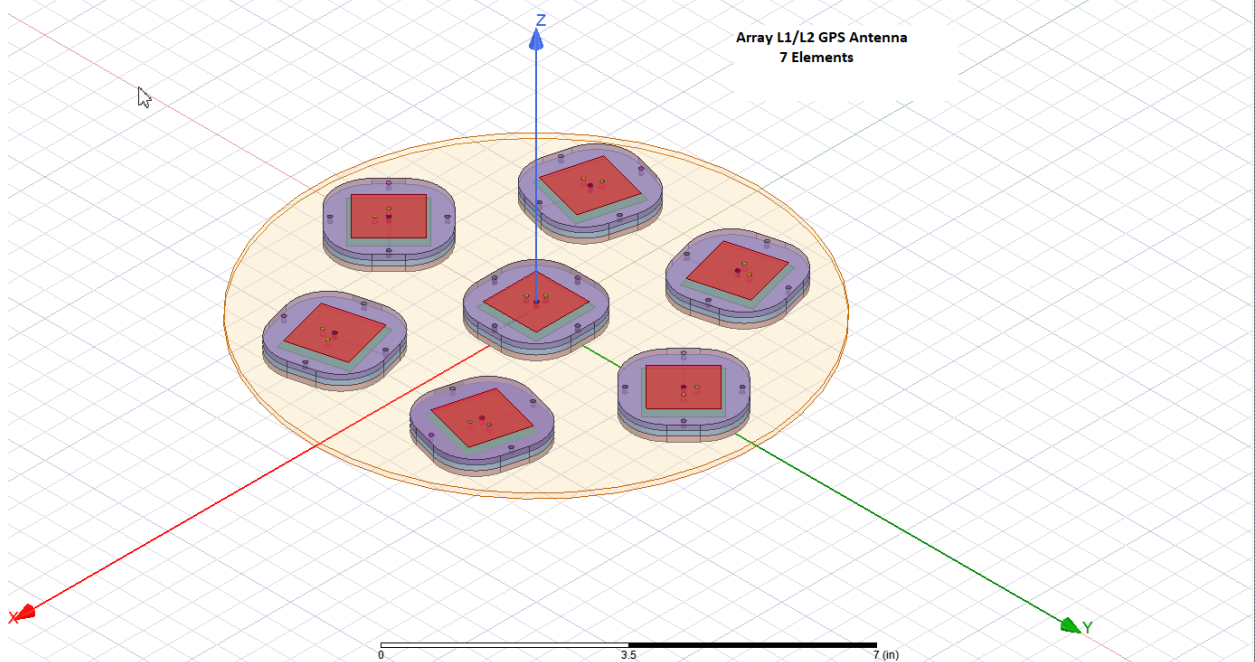
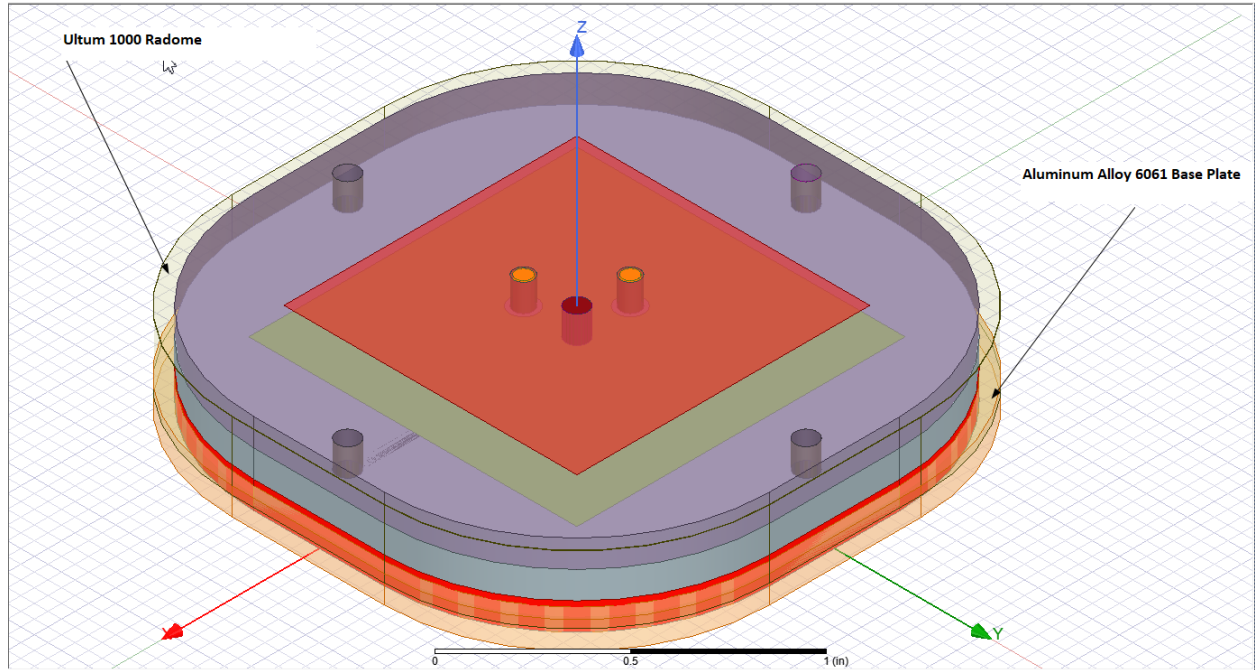


RHCP L1 L2 GPS Antenna
RHCP 1x 7 L1/L2 GPS Antenna Array



Electrical:

Frequency: L1:1,575 +-10MHz.
L2:1,227 +-10MHz.

Polarization: RHCP

VSWR: 2.0:1

Output impedance: 50 Ohms

Mechanical:

Size: Width: 1.98 inch, Length: 1.98 inch, Height: 0.35Inch.

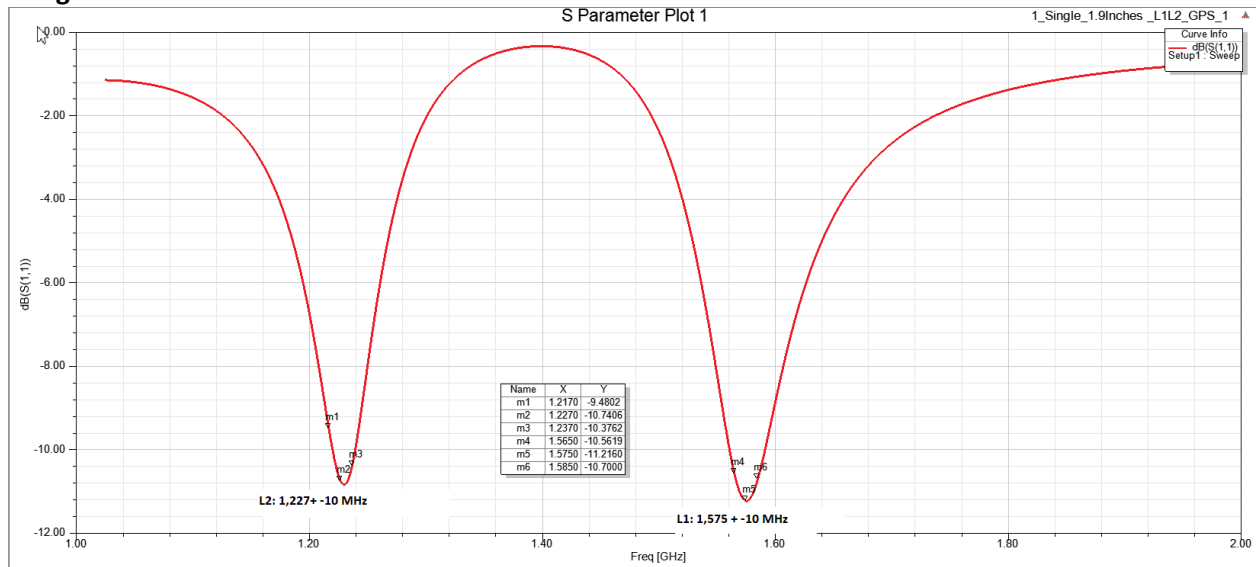
Base plate: Aluminum Alloy 6061

Radome: Ultum 1000 (Drawing For Simulation version)

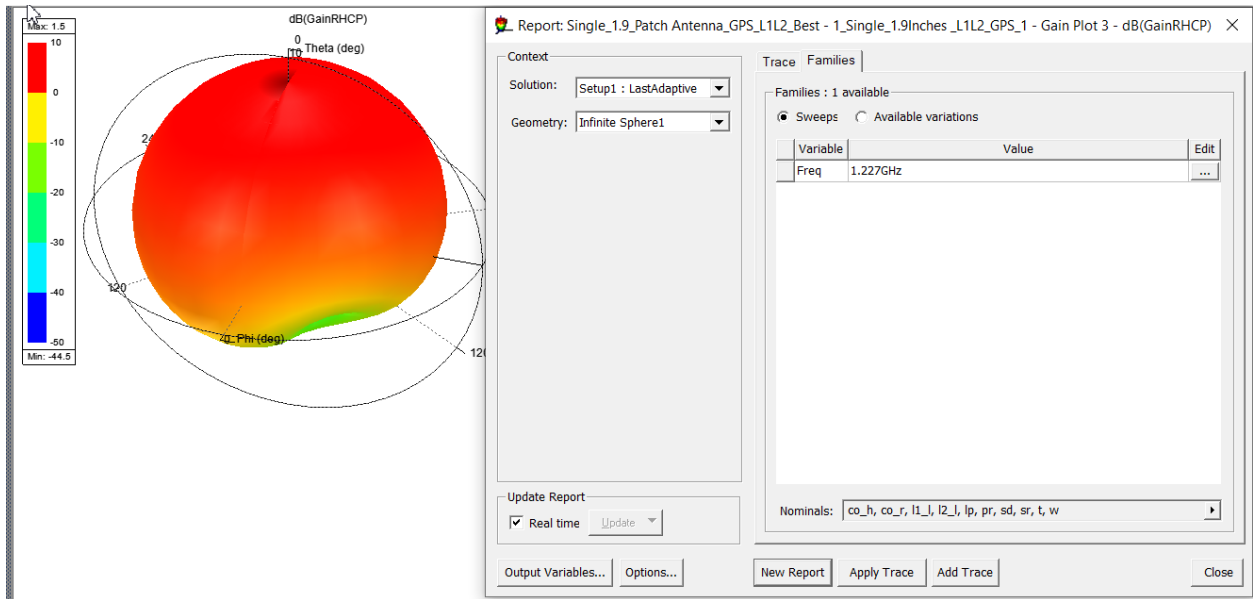
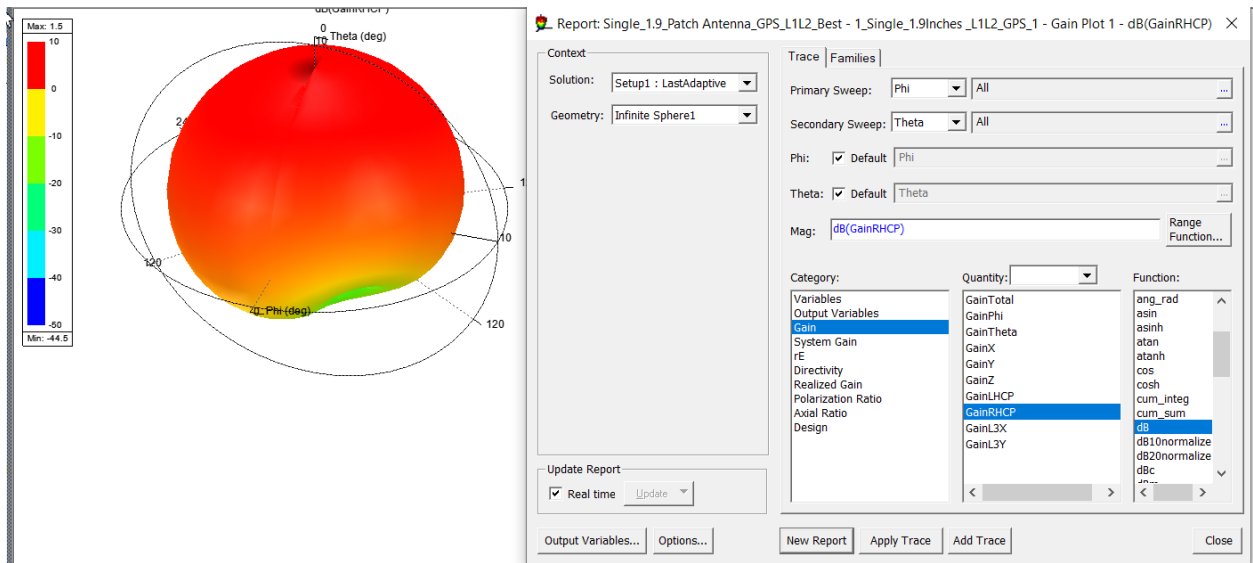
Element: ceramic

Ground plane: 12x 12 inches.

Designed: Victor Dat Do



L2: 1,227+ -10MHz



Report: Single_1.9_Patch Antenna_GPS_L1L2_Best - 1_Single_1.9Inches_L1L2_GPS...

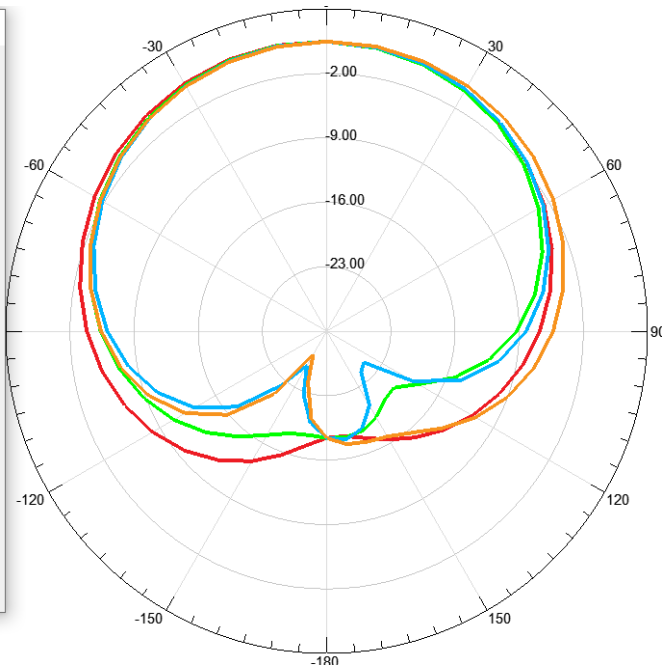
Context
 Solution: Setup1 : LastAdaptive
 Geometry: Infinite Sphere1

Trace Families Families Display
 Primary Sweep: Theta All
 Ang: Default Theta
 Mag: dB(GainRHCP) Range Function...

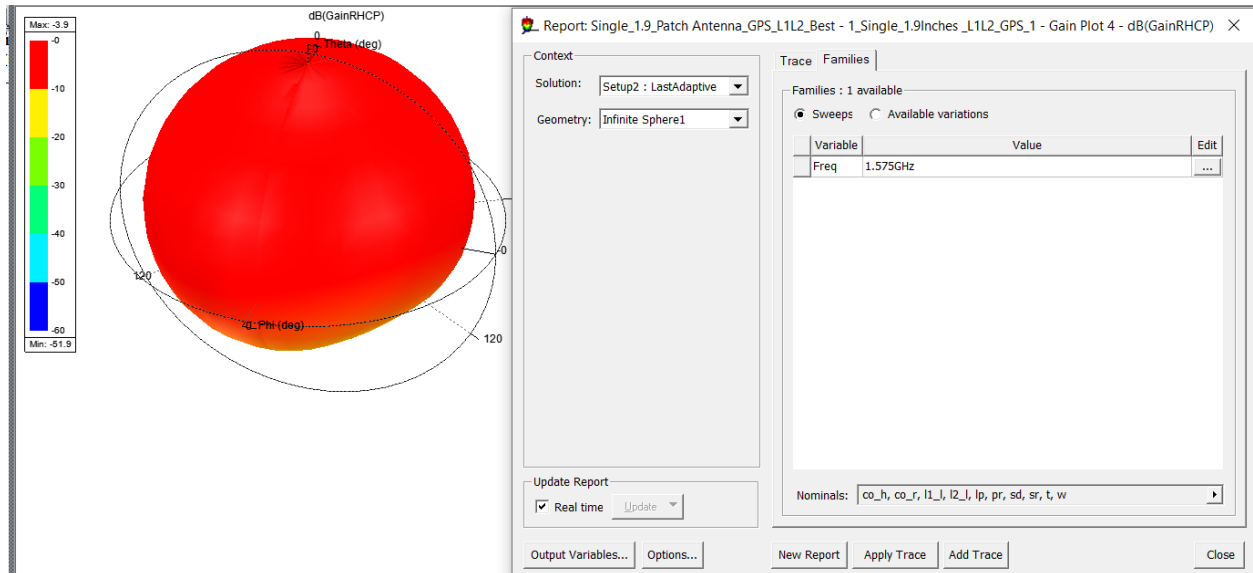
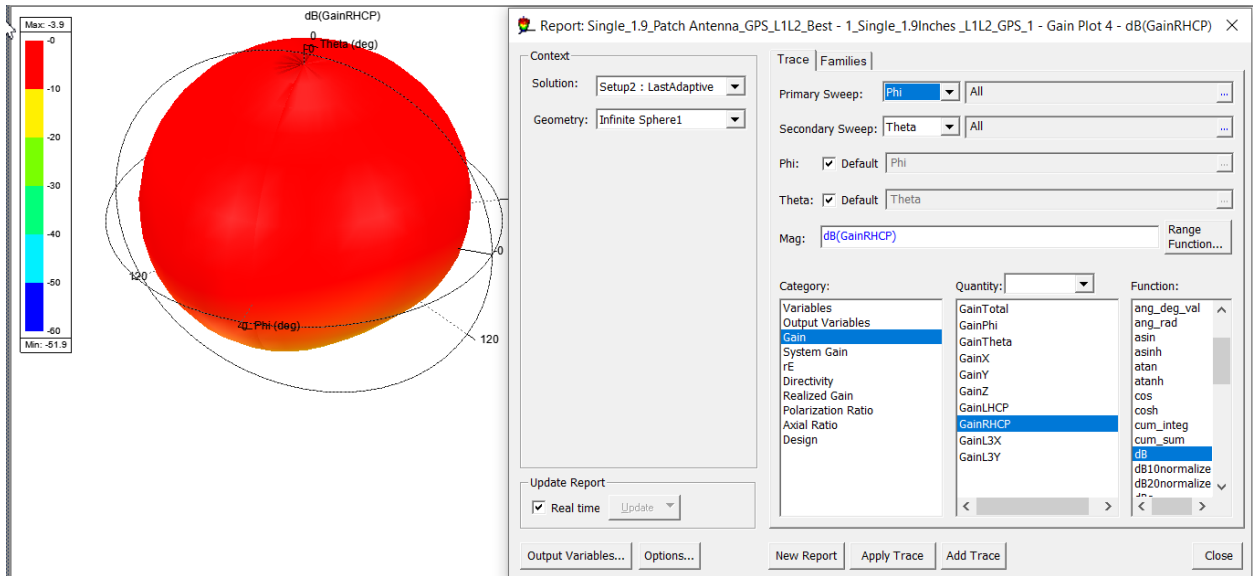
Category:	Quant	Function:
Variables	GainTotal	<none>
Output Variat	GainPhi	abs
	GainTheta	acos
	GainX	acosh
System Gain	GainY	ang_deg
FE	GainZ	ang_deg_val
Directivity	GainLHCP	ang_rad
Realized Gain	GainRHCP	asin
Polarization F	GainL3X	asinh
Axial Ratio	GainL3Y	atan
Design		atanh
		cos
		cosh
		cum_integ
		cum_sum
		dB
		dB10normalize
		dB20normalize
		<
		>

Update Report
 Real time Update

Output Variables... Options... New Report Apply Trace Add Trace Close



L1: 1,575+-10MHz



Report: Single_1.9_Patch Antenna_GPS_L1L2_Best - 1_Single_1.9Inches_L1L2_GPS...

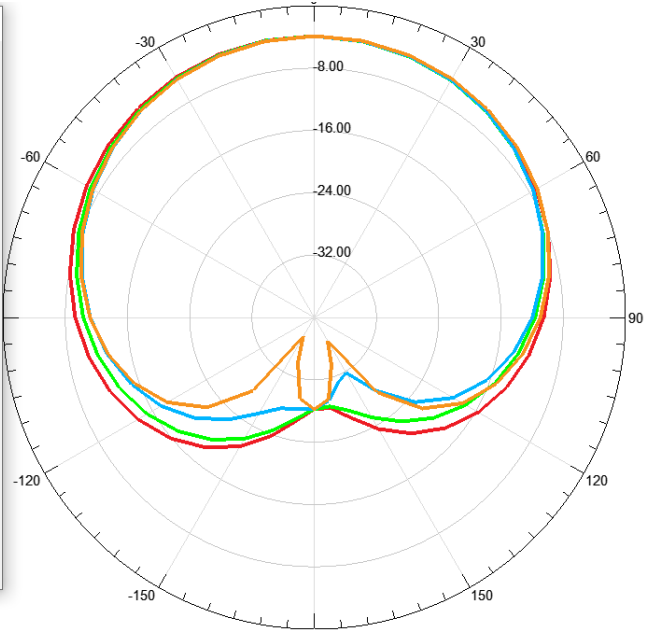
Context
 Solution: Setup2 : LastAdaptive
 Geometry: Infinite Sphere1

Trace Families Families Display
 Primary Sweep: Theta All
 Ang: Default Theta
 Mag: dB(GainRHCP) Range Function...

Category:	Quant	Function:
Variables	GainTotal	<none>
Output Variat	GainPhi	abs
Gain	GainTheta	acos
System Gain	GainX	acosh
rE	GainY	ang_deg
Directivity	GainZ	ang_deg_val
Realized Gain	GainLHCP	ang_rad
Polarization R	GainRHCP	asin
Axial Ratio	GainL3X	asinh
Design	GainL3Y	atan
		atanh
		cos
		cosh
		cum_integ
		cum_sum
		dB
		dB10normalize
		dB20normalize
		<
		>

Update Report
 Real time Update

Output Variables... Options... New Report Apply Trace Add Trace Close



Plot 8
 (GainRHCP)